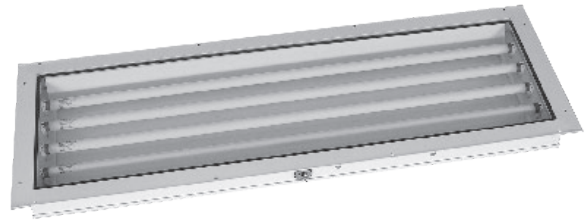


The 400 Series Rear Access product is an ideal paint spray booth product when a rear access fixture is desired. This series now has a 2' fixture as well as the 4' fixture cataloged. The 4' fixture comes in 2, 4 & 6 lamp with the following lamp options: T8 32W and T5HO 54W lamps. The 2' - 3 lamp fixture uses (3) T8 17W lamps. LAMPS SOLD SEPARATELY.



| SERIES | MODEL # | DESCRIPTION | OPTIONS |
|--------|-------------|--------------------------|---|
| 400 | 390231-3546 | 3 Lamp T8 17W, 2 Ft. | EM: Battery/Driver Backup (90 Min.) T8/T8HLO (120V & 277V) U.S. ETL/UL only 5901: 8 Ft. 3-Wire Whip |
| | 390421-3613 | 2 Lamp T8 32W, 4 Ft. | |
| | 390421-6975 | 2 Lamp T8 32W HLO, 4 Ft. | |
| | 390421-3265 | 2 Lamp T5 54W HO, 4 Ft. | |
| | 390441-3546 | 4 Lamp T8 32W, 4 Ft. | |
| | 390441-6747 | 4 Lamp T8 32W HLO, 4 Ft. | |
| | 390441-4843 | 4 Lamp T5 54W HO, 4 Ft. | |
| | 390461-3546 | 6 Lamp T8 32W, 4 Ft. | |
| | 390461-7059 | 6 Lamp T8 32W HLO, 4 Ft. | |
| | 390461-3265 | 6 Lamp T5 54W HO, 4 Ft. | |

LISTINGS

UL 844
 CSA 22.2 No. 137.0
 Paint Spray Listed
 UL 1598 Wet / Damp
 CSA 22.2 No. 250.0
 Class I D2 Groups A,B,C,D T3C 160°C
 Class II D2 Groups F,G T3C 160°C
 NFPA 33
 40°C ambient rating

FEATURES

Piano hinged rear access fixture - easy relamping
 Telescopic/spring loaded lamp holders
 20 gauge (enclosed and gasketed) steel construction
 with white powder coat housing which creates a durable, highly reflective finish.

LENS

3/16" clear tempered glass.

ELECTRICAL

Available in 2 Ft. 17 watt T8 lamps and
 4 Ft. 32, 44 and 54 watts, T8, T8HLO and T5HO lamps.
 Voltages of 120, 277, 347 and 480 at 50/60Hz

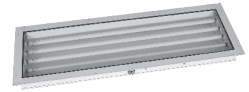
OPTIONS

5901: 8 Ft. 3-wire whip

400

HAZARDOUS - BOOTH

Industrial • Clean Rooms • Paint and Powder Booths • Prep, Inspection, Sanding Areas



DIMENSIONS AND MOUNTING

Notes:

Multiple voltages available, consult factory.

Fixture dimensions are nominal. Cut-out dimensions are actual.

| MODEL | FIXTURE DIMENSIONS | | | | MOUNTING DIMENSIONS | |
|--------|--------------------|---------|---------|---------|---------------------|-----|
| | A | B | C | D | E | F |
| 390231 | 10 1/2" | 12 1/2" | 26" | 28 3/8" | 11 3/4" | 8" |
| 390421 | 10 1/2" | 12 1/2" | 50 1/4" | 52 3/8" | 10 3/4" | 7" |
| 390441 | 15 1/2" | 17 1/2" | 50 1/4" | 52 3/8" | 15 3/4" | 12" |
| 390461 | 20 1/2" | 22 1/2" | 50 1/4" | 52 3/8" | 20 3/4" | 17" |

