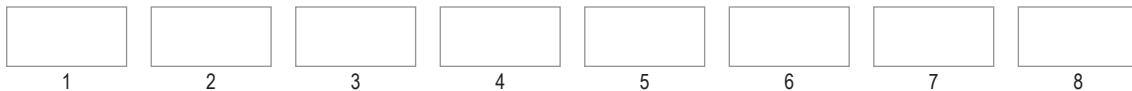


The LE201 is a 2 Ft. wet/damp listed fixture featuring a **die cast aluminum** housing and an acrylic or polycarbonate lens. With an IP66 rating, this wide distribution fixture is ideal for wash and prep bays, parking garages, and industrial areas.



1 SERIES	2 SOURCE	3 CCT	4 VOLTAGE
LE201	P37: 37W (3000Lm) P57: 57W (4100Lm) P79: 79W (5250Lm) P100: 100W (6050Lm)	50: 5000K	V1: 120-277V
5 LENS	6 SUPPLY	7 MOUNT	8 FINISH
VAP: V-shaped Clear Acrylic Patterned Lens VAF: V-shaped Frosted Acrylic Patterned Lens VPC: V-shaped Clear Polycarbonate Patterned Lens	C: Cord with blunt end CP1: Cord with IP rated twist lock plug 120V CP2: Cord with IP rated twist lock plug 277V	M: Surface mount bracket Uses standard snap on stainless steel brackets included	W: White powder coat B: Black powder coat R: Raw aluminum

### CERTIFICATIONS

UL 1598 Wet / Damp  
CSA 22.2 No. 250.0  
UL 8750  
CSA 22.2 No. 250.13  
IP66  
45°C ambient rating

### FEATURES

Die-cast aluminum housing with a white powder coat finish  
Acrylic and polycarbonate lenses  
Specular aluminum reflector  
One piece silicone gasket  
Stainless steel Mounting brackets (included)  
Canted LED Mounting

### PERFORMANCE

#### Wattages:

P37: 37W (3000 lumens)  
P57: 57W (4100 lumens)  
P79: 79W (5250 lumens)  
P100: 100W (6050 lumens)

#### Voltages:

120-277 Volts

### OPTIONS

#### Lens:

V-shaped clear acrylic patterned lens  
V-shaped frosted acrylic patterned lens  
V-shaped clear polycarbonate patterned lens

#### Supply Connection:

Cord with blunt end  
Cord with IP rated twist lock plug 120V  
Cord with IP rated twist lock plug 277V

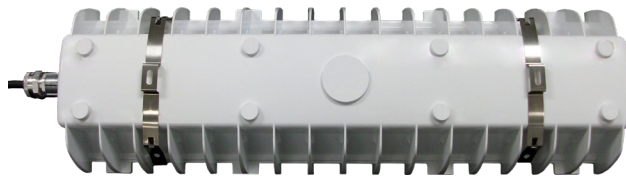
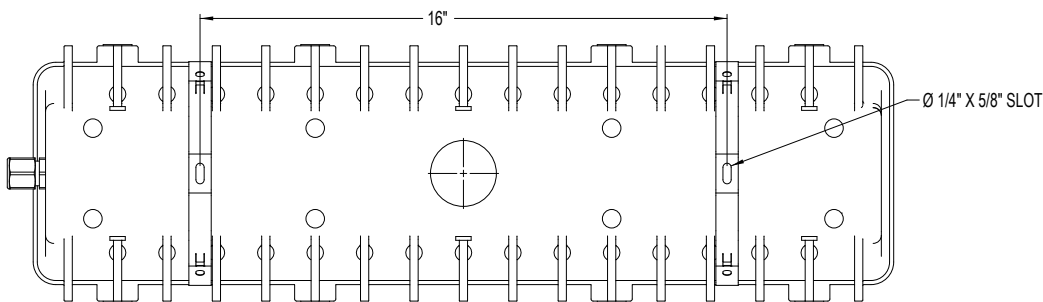
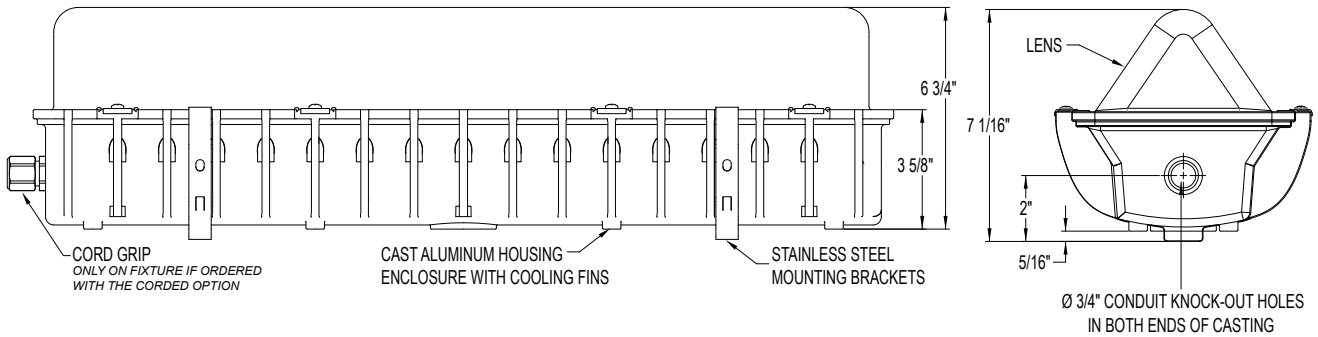
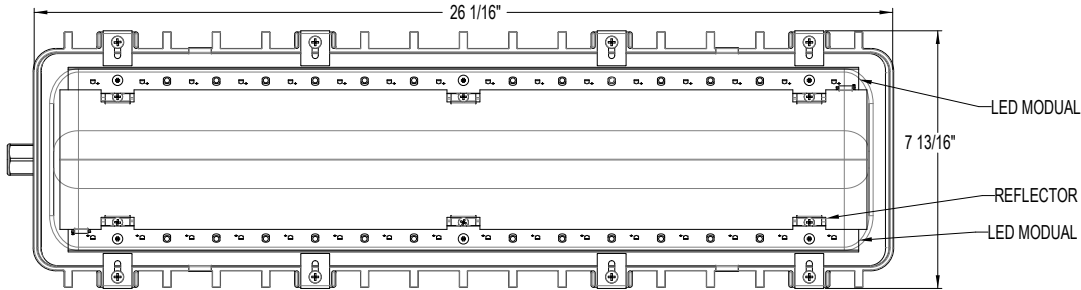
# LE201

## LED WET / DAMP LIGHTING

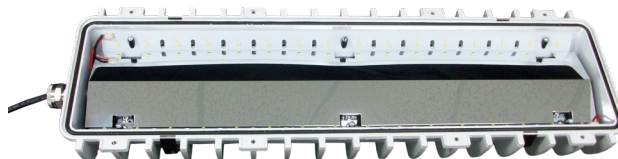
Food & Beverage Processing • Industrial • Pulp & Paper • Shipyards / Marine • Water Treatment



### DIMENSIONS



Mounting brackets in place



Specular aluminum reflector